

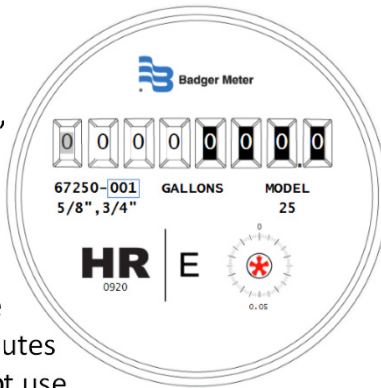
Leak Detection Tips

To check for concealed leaks, there are two good do-it-yourself approaches:

The Meter Check

Check all faucets, inside and outside, to make sure they are off. Find your inside water meter and record the reading on the dials. Wait 20 minutes

to one hour. Do not use any water during this time, and when the time is up, check the reading to see if it changed. If the reading has changed, you have some type of leak. Also, observe the red star for movement. The red dial is a flow indicator and is sensitive enough to record small flows such as leaks. If the dial is moving when you are not using water, this indicates a leak exists.

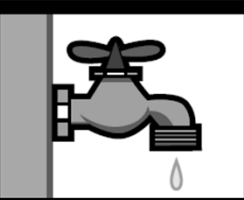
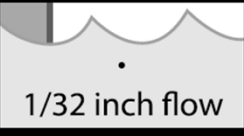

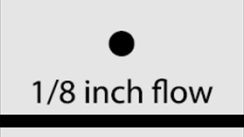
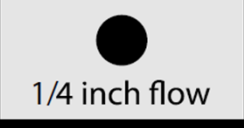


Faucet Check

All faucets, including those in the basement or storage areas, should be checked periodically. Most faucet and shower head leaks results from worn washers. Replace washers on dripping faucets and showers immediately. Even a small leak can waste several gallons of water a day and can add up on your water bill. Your water heating costs will also increase if it is a hot water leak.

Facts About Leaks

- ◆ 10% of homes have leaks that waste 90 gallons of water or more per day.
- ◆ The average household leak can waste more than 10,000 gallons of water every year.
- ◆ A running toilet can waste as much as 200 gallons of water or more per day

	A dripping faucet wastes 1,500 gallons in 3 months
	Wastes 18,000 gallons in 3 months
	Wastes 70,000 gallons in 3 months
	Wastes 300,000 gallons in 3 months
	Wastes 1,000,000 gallons in 3 months

Leak Detection Guide



Fix leaks, save water and money



Brown Deer Public Water Utility

8950 N Arbon Dr ◆ Brown Deer, WI 53223
(414) 371-3080 | waterclerk@browndeerwi.org

Check for Toilet Leaks

A leaking toilet is one of the most common water wasters, but toilet leaks are less noticeable than faucet leaks. Here are some simple tests that you can use to see if you have a toilet leak:

Flush the toilet. Wait for the toilet to stop refilling, then make a visual inspection of the bowl. If water is still running into the bowl, or if water can be heard, your toilet is leaking.

Remove the toilet tank lid and check the water level in the tank. The water level should come up to 1" or so below the opening to the overflow pipe. If the water level is too high, water can flow continuously down the overflow tube. If the water level is even with the top of the overflow tube, try sprinkling a little powder on the surface of the water. If you see the powder go down the overflow tube, the toilet is leaking.

Although water may not be seen or heard running, your toilet may have a silent leak. Try conducting this simple experiment. Take the lid off the toilet tank and add a couple drops of food coloring to the water in the tank. Do not flush. Wait 15 minutes. If the dye shows up in the toilet bowl, your toilet has a leak. The plunger ball or flapper probably needs to be cleaned or replaced, or there could be a crack in the overflow tube.

Toilet Troubleshooting

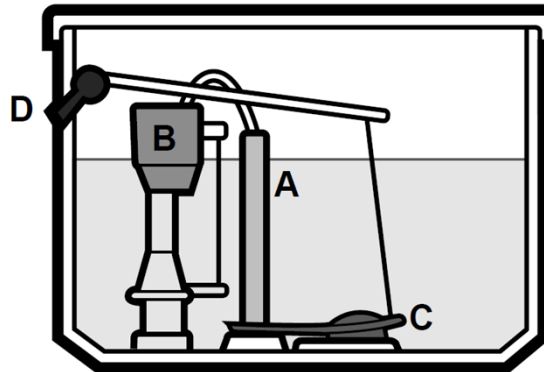
Check your toilets for leaks twice a year:

A. Overflow Tube The tank water level should be 1" below the opening of this tube. If the level is higher, water can leak down the tube. Adjust the water level with the adjustment screw or adjustment clip.

B. Toilet Float These floats can wear out in 2 to 7 years, faster if you use chemicals in the tank. Replace yours if it's cracked or waterlogged.

C. Flush Valve Bulb or Flapper These rubber valves may not seal completely, causing water to leak around them. Clean, repair or replace faulty flush valves.

D. Handle The handle controls the lifting and lowering of the flapper or bulb. Tighten a loose handle or straighten the control arm if it is rubbing. Check all connections for smooth operation. When the toilet is flushed, make sure nothing catches under the flapper.



Other Places to Look for Leaks

Humidifier - A humidifier needs a continuous supply of water, often supplied by a line or tubing plumbed directly into the mechanism. Control valves can stick open, causing water to flow through the humidifier.

Ice Maker - Automatic refrigerator ice-makers also have supply lines or tubing. This tubing can spring a leak, sometimes even inside a wall.

Swimming Pool - To check your pool for a leak, fill a five-gallon plastic bucket to approximately 1" from the top with pool water and mark the water level in the bucket. Mark the normal water level on the pool with tape, a wax pencil or crayon. Turn off all water filling devices. Place the bucket on a step in the pool and wait 24 hours. If the water level in the pool drops more than the water level in the bucket, you have a leak. If needed, please contact a pool contractor who specializes in detecting swimming pool leaks.

Outside Hose Bibbs- Periodically check outside taps for leaks, especially during the summer watering season. A hose mistakenly left on can dribble away thousands of gallons of water over a summer season. Outside taps can freeze in frigid winter temperatures. If your house does not have frost proof spigots, be sure to turn water off at the valve on the line that supplies the outside tap.