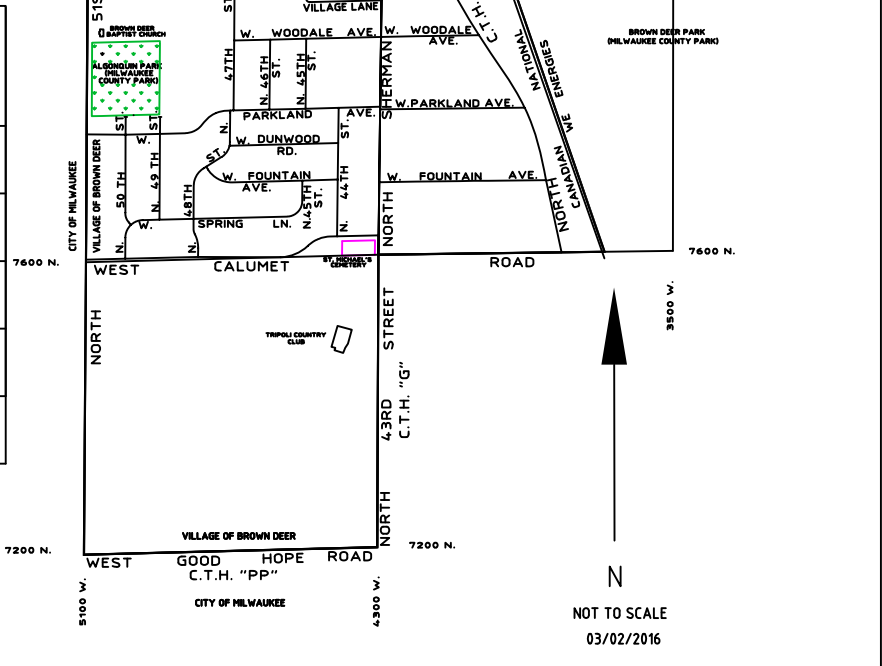


	N. 56th St. (1551'L x 24'W)	W. Bangs Ave. (275'L x 24'W)	N. 52nd St. (1163'L x 24'W)	N. 54th St. (1061'L x 24'W)	W. Goodrich Ln. (939'L x 24'W)
Pulverize Pavement (SY)	4287	771	3192	2979	2659
2.5" Asphaltic Concrete Roadway Paving Binder Course (TONS)	582	106	439	410	366
15" Asphaltic Concrete Roadway Paving Surface Course (TONS)	349	64	264	246	220
3" Asphalt Driveway Paving (TONS)	133	25	107	113	71
Driveway Prepping (SY)	806	147	648	680	426

VILLAGE OF BROWN DEER, WI
2016 STREET
RECONSTRUCTION PROGRAM

**— = STREETS
TO BE REPAVED**



NOT TO SCALE
03/02/2016